

ESP / **ENG** / FRA / ITA

**FECIN**<sup>®</sup>

Catalogue  
**2022**

**F/60** **YEARS**  
DESIGNING  
& PRODUCING



**F/60** YEARS  
DESIGNING  
& PRODUCING



# FECIN®

## COMMITMENT TO THE DESIGN AND MANUFACTURING OF SOLUTIONS FOR SURFACE TREATMENT

We are a brand with 60 years of experience in industrial brushing, committed to sustainable competitiveness, which evolves in image, product and service as specialists in surface treatments.

On this anniversary, we have developed an evolution in our brand image that affects the entire company. This change is focused on reinforcing our brand as the reference in the industrial brushing market.

They are now three generations manufacturing brushes, adding value to our customers with an excellent product and a close and flexible service.

From the innovation department, we continue to bet on R + D + I in products and in the continuous incorporation of novelties in current models and new needs that our

clients and users of the national and international market mark us.

With this new catalogue we want to make you participate in all this change. It represents an important milestone in the trajectory of our company to face a more sustainable future, seeking the satisfaction of our workers, customers and suppliers. Profitability and reduction of environmental impact.



A / P.06

## Technical information



How to choose the right brush ..... 06  
 Safety warnings ..... 10  
 Recommendations for use ..... 10  
 New image..... 11

B / P.12

## Industrial brushes



F24 ..... 12  
 F25 ..... 13  
 LAR ..... 14  
 LAR (XLock) ..... 17  
 F18 Pipelines..... 18  
 F18 ..... 19  
 F15 ..... 20  
 F17 ..... 22  
 F26 ..... 23  
 Gogor..... 23  
 F21 ..... 24  
 F22 ..... 25  
 F16 Cablecillo..... 25  
 F22/BT/TAT ..... 26

C / P.27

## DIY brushes



BE-TA ..... 27  
 BR-BO..... 28  
 FBE-FTA-FBR ..... 28

D / P.29

## Tube brushes



F13 .....	29
Tube brushes.....	30
Chimney cleaning brushes.....	31
Brushes for grass trimmers .....	31

E / P.32

## Hand brushes



Hand brushes .....	32
SPID .....	33
Wire and Sweeping Broom Brushes.....	34
Hand brushes .....	35

F/ P.36

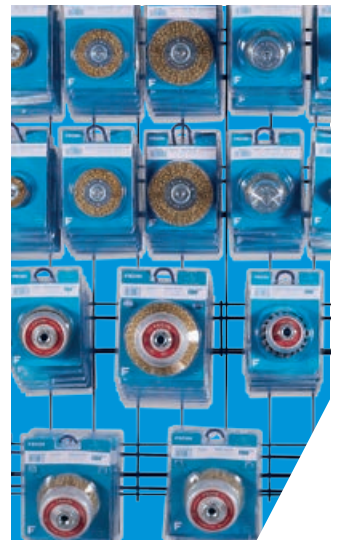
## Deburring and Wood finishing brushes



Brushes for deburring machines .	36
Wood finishing brushes .....	37

G / P.38

## Exhibitors



DIY Box .....	38
DIY Exhibitor .....	38
High Speed Exhibitor .....	39
General Exhibitor....	39

# A

# Technical information

## How to choose the right brush

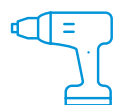
The choice of brush depends, to a great extent, on the type of material to be brushed, in the case of machine operated brushes, the characteristics of the machine in which the brush is to be mounted must be known and the type of finish we wish to achieve.



## SYMBOLS



### Tool



Power drill



Angle grinder



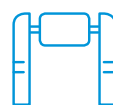
Bench grinder



High speed machines



By hand



Industrial



Small angle grinder



Portable wood machine

### Security



Gloves



Safety goggles



Mask

### Packing



Blister



Box



Bulk



# 1 Type of material



## CARBON STEEL

Among the main characteristics of carbon steel, we can highlight its great resistance and hardness. For this reason, it is advisable to use brushes with carbon steel wire.



## STAINLESS STEEL

Stainless steel provides strength corrosion resistant and high durability. To keep these properties, it is recommended to use brushes with stainless steel wire.



## ALUMINUM

Aluminum is a lightweight and highly corrosion resistant material, so it is recommended to use brushes with stainless steel wire.



## WOOD

Although there are many types of wood depending on the tree of origin, softer or harder the resistance in its handling will be determined by the structure of his vein. There is no single criterion for choosing a brush, but the use of abrasive nylon or steel wires is recommended.

## OTHER SURFACES






Stones, jewelry, leather goods, rubber, titanium, marble, granite, ceramics, weeds and a long etc. They are surfaces where the brushes can provide the necessary finishes.

Contact us for more information.

# 2 Machine usage

Depending on the type of machine that we must use, we must consider the following characteristics:

- ▶ Maximum permitted diameter
- ▶ Rotational speed (RPM).
- ▶ Characteristics of the arbor (diameter or type of thread: M14, 5/8").

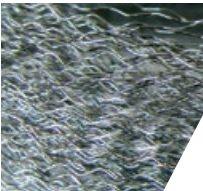
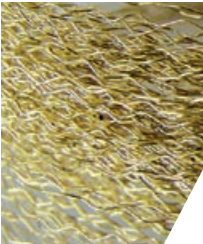

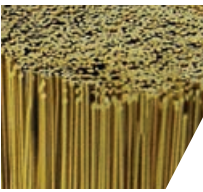
Machine	RPM	Normal brushes	Model	Ø Brush diameter
 Fixed bench grinders	1.500 – 3.000	Crimped and knotted wheels	F-15, F-23, F-18, F-16 and F-17	Between 75 mm (3") and 350 mm (14")
 Angle grinder	5.000 – 8.500	Crimped and knotted wheels Crimped cup, knotted cup nylon cup, able cup	F-15, F-18 and F-24, F-25, F-17 y F-16-26	Between 100 mm (4") and 175 mm (7"). Between 80 mm (3.1/4") y 150 mm (6")
 Mini angle grinder	10.000 – 13.000	High speed cup, conical and flat model brushes	LAR24, LARCO, LARPO, LAR25, LARCR, LARPR	Between 65 mm (2.3/4") and 125 mm (5")
 Pneumatic Grinder and portable drills	15.000 – 20.000	Wheels and industrials end brushes with shank	F-21, F-22, BT	Between 12 mm (1/2") and 100 mm (4")
 DIY drill	4.500	Wheels, cups and end brushes with shank	BR, BO, FBE, FTA, FBR, BE, TA y TAT	Between 22 mm (1") and 100 mm (4")

# 3 Desired finish

The finish that we will achieve in our work will come determined by the following variables:

- 3.1 Type of wire and nylon
- 3.2 Wire form
- 3.3 Trim length
- 3.4 Wire thickness

## 3.1 Type of wire and nylon

	Material	Cód	Ø / mm	Ø / "	Pull strength	Carbon contents	Characteristics
	<b>Stainless steel</b>	BE	0,20	.008"	160-180 kg/mm <sup>2</sup>	<0.030%	AISI 304-L and AISI 302 Standards For brushing on stainless steel, aluminium or non-ferrous metals. Slightly magnetic.
		BG	0,30	.012"			
		BI	0,40	.016"			
		BK	0,50	.020"			
	<b>Brass coated steel Monofilament</b>	CD	0,15	.006"	240-260 kg/mm <sup>2</sup>	0,75%	Flexibility and high performance Protected against rust Not suitable for stainless surfaces. Wide range of finishes.
		CE	0,20	.008"			
		CF	0,25	.010"			
		CG	0,30	.012"			
		CI	0,40	.016"			
		CK	0,50	.020"			
	<b>Steel</b>	EH	0,35	.014"	180-200 kg/mm <sup>2</sup>	0,50-0,60%	High removal capacity Suitable for twisted knot wire brushes Not suitable for stainless surfaces
		EI	0,40	.016"			
		EK	0,50	.020"			
		EL	0,60	.023"			
		EQ	0,80	.032"			
	<b>Brass</b>	HG	0,30	.012"	80-95 kg/mm <sup>2</sup>		Does not produce sparks. Ideal for fine finishes on Non-ferrous materials
		HI	0,40	.016"			
	<b>Cable crimped wire Brass coated steel</b>	CEA	2+2 x 0,32	12 x .009"	240-260 kg/mm <sup>2</sup>	0,75%	Flexible, compact, aggressive.
		<b>Abrasive nylon</b>	NA	180			
	ROJO		80				
	AZUL		150				



### 3.2 Wire form:

**Crimped:** Because of their better flexibility, are suitable for working on irregular surfaces and give a more regular and fine finish.

**Twisted:** Give to the brush a longer lasting and has a high removing capacity but gives a coarser finish.

**Cable crimped wire:** These wires are made up of a set of high strength steel wires which form a flexible, compact, and aggressive unit. The type of finish and cutting capacity are medium.



### 3.3 Trim length

A long trim length results in a flexible brush, which allows a uniform effect to be achieved, even on irregular surfaces. A shorter trim length gives a greater removing capacity.



### 3.4 Wire thickness

The diameter of the wire affects the type of finish that is achieved. The thicker the wire the coarser the brushing with faster cutting. A fine wire gives a smooth finish.



### Threaded nuts identification



**MR MULTITHREAD**  
Multithread nut (M14 / W5/8)

## SAFETY WARNINGS

In accordance with the European Standard EN 1083.2 on safety requirements for the use of metal brushes as machine accessories; the following instructions for use must be complied with:

- ▶ Always use safety goggles, clothes, and suitable equipment.
- ▶ Do not use brushes in machines whose speeds are greater than the maximum speed of the brush.
- ▶ Do not remove any protective equipment from the machine.
- ▶ Do not use brushes in poor condition. Rust or any other type of chemical alteration to the wire can affect the performance of the brush. Keep the brushes stored on shelves, containers, or boxes so that they are protected from the effects of the environment (damp, acids, gases, etc.).

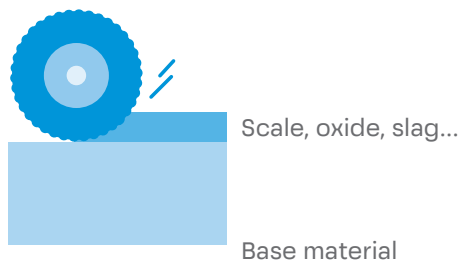


## RECOMMENDATIONS FOR USE

- ▶ Check before use that the brush is not damaged.
- ▶ Take care when mounting. Follow the instructions for use very carefully.
- ▶ The brushing task must be done with the ends of the wires.
- ▶ The advantage of brushes, with respect to abrasives, is due to the flexibility of the wire, it better adapts to irregular surfaces.
- ▶ Excessive pressure on the brush can cause an over-curvature effect on the wires, increasing fatigue, leading to premature breakage, and, therefore, to a considerable reduction in their useful life.

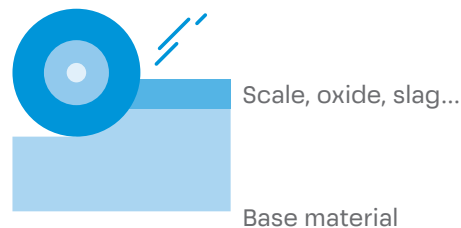
### Wire brushes

**DOESN'T REMOVE** base material



### Hard abrasive

**will REMOVE** base material



PROBLEM	RECOMMENDED SOLUTION
The brushing is excessively aggressive	<ul style="list-style-type: none"> <li>- Choose a brush with finer wire.</li> <li>- Choose a brush with longer trim length.</li> <li>- Work at a lower speed.</li> </ul>
The brushing is not sufficiently aggressive	<ul style="list-style-type: none"> <li>- Choose a brush with thicker wire.</li> <li>- Choose a brush with shorter trim length.</li> <li>- Work at a higher speed.</li> </ul>
The brush does not remove the burr but flattens and polishes it	<ul style="list-style-type: none"> <li>- Choose a brush with thicker wire.</li> <li>- Choose a brush with shorter trim length.</li> <li>- Work at a higher speed.</li> </ul>
The finish needs to be finer	<ul style="list-style-type: none"> <li>- Choose a brush with finer wire.</li> <li>- Choose a brush with a longer trim length.</li> <li>- Choose a nylon abrasive brush</li> </ul>
The brushing is not uniform	<ul style="list-style-type: none"> <li>- Reduce the brushing pressure.</li> <li>- Automate the operations to avoid human variability.</li> </ul>



## NEW IMAGE

The new image of the FECIN brushes is aimed at improving the identification of the type of brush that we are going to use.

Through the colored rings, we can differentiate the types of materials that we have available.



Steel



Stainless Steel



Brass



Nylon

- Red:** Steel
- Blue:** Stainless Steel
- Green:** Brass
- Orange:** Nylon

- ▶ Color ring, facilitates identification of the type of wire.
- ▶ Clearer brush information.
- ▶ New color of cups.
- ▶ Professional quality



## Sectors



Aeronautics



Agriculture



Automotive



Railway



Carpentry



Construction



Gardening



Oil&Gas



Welding



General Industry

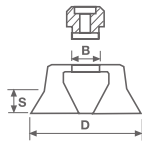
B

# Industrial brushes



## F24

Crimped Wire Cup



ø Exterior (D)	Trim length (S)	Thread (B)	Coated steel ø0,30 mm. .012" CG	Stainless steel ø0,30mm. .012" BG	Uts/box	RPM
			Code	Code		
mm / "	mm / "					
<b>60</b> <b>2.3/8"</b>	22 7/8"	M-14 W-5/8 MR	240600CG	240600BG	12	13000
<b>75</b> <b>3"</b>	22 7/8"		240750CG	240750BG		13000
<b>80</b> <b>3.1/4"</b>	30 1.3/16"		240800CG	240800BG		8500
<b>100</b> <b>4"</b>	30 1.3/16"	M-14 W-5/8 MR	241000CG	241000BG		8500
<b>125</b> <b>5"</b>	30 1.3/16"		241250CG	241250BG		8500
<b>150</b> <b>6"</b>	40 1.1/2"		241500CG	241500BG		6000

\*It is necessary add to the article code, the required thread:

Article code: 241000CG + Thread code: M14

Order example: **241000CGM14**

**Very important:**

Available with 16mm and 22mm arbor hole.

**Note:**

Available with the threaded nut M-10 x 1,5 / M-10 x 1,25.

MULTITHREAD (see page 9) Multithread nut (M14 / W5/8)

### Applications and uses:

- ▶ Robust tool for brushing large surface areas. In shipyards, boilermaking and construction industries, etc.
- ▶ For use on electric or pneumatic portable machines (angle grinders).
- ▶ When anti-spark material is required, brass wire must be used.

### Packing:



Blister



Box



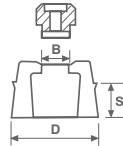
Bulk





# F25

## Twist Knot Wire Cup



ø Exterior (D)	Thread (B)	Steel ø0,50mm. .020" EK	Steel ø0,80mm .032" EQ	Stainless steel ø0,50mm. .020" BK	Uts/box	RPM
		Code	Code	Code		
mm / "						
<b>65</b> <b>2.3/4"</b>	M-14 W-5/8 MR	250601EK	250601EQ	250601BK	12	13000
<b>75</b> <b>3"</b>		250701EK	250701EQ	250701BK		13000
<b>80</b> <b>3.1/4"</b>	M-14 W-5/8 MR	250801EK	250801EQ	250801BK		8500
<b>100</b> <b>4"</b>		251001EK	251001EQ	251001BK		8500
<b>125</b> <b>5"</b>		251251EK	251251EQ	251251BK		8500

## Twist Knot Wire Cup (no bridle)

ø Exterior (D)	Thread (B)	Steel ø0,50mm. .020" EK	Steel ø0,80mm .032" EQ	Stainless steel ø0,50mm. .020" BK	Uts/box	RPM
		Code	Code	Code		
mm / "						
<b>80</b> <b>3.1/4"</b>	M-14 W-5/8 MR	A250801EK	A250801EQ	A250801BK	12	8500
<b>100</b> <b>4"</b>		A251001EK	A251001EQ	A251001BK		
<b>125</b> <b>5"</b>		A251251EK	A251251EQ	A251251BK		

It is necessary add to the article code, the required arbor hole/thread: Article code: 251000EK + Arbor hole/Thread code: M14. Order example: **251000EKM14**

MULTITHREAD (see page 9)  
Multithread nut (M14 / W5/8)

### Very important:

Available with 16mm and 22mm arbor hole.

### Note:

Available with the threaded nut M-10 x 1,5 / M-10 x 1,25.

### Applications and uses:

- ▶ Aggressive tool for use on heavy tasks and large surface areas.
- ▶ Large removing capacity.
- ▶ In shipyards, boilermakers, cleaning shuttering panels.
- ▶ When the wire is worn up to the nickel plated band, the band is removed by hitting it with a hammer, thus exposing more wire and prolonging its life.



### Packing:



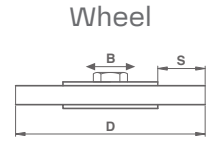
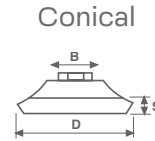
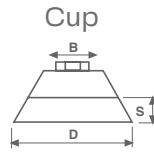
Box



Bulk

# LAR

High Speed Line  
(With Crimped Wire)



Model	ø Exterior (D)	Trim length (S)	Thread (B)	Coated steel ø0,30 mm. .012" CG	Stainless steel ø0,30mm. .012" BG	Uts/box	RPM
	mm / "			mm / "	Code		
Cup	75 3"	22 7/8"	M-14 W-5/8 MR	240750CG	240750BG	12	13000
Conical	100 4"	24 1"		CO1510CG	CO1510BG		
Wheel	115 4.1/2"	25 1"		PO115CG	PO115BG		

It is necessary add to the article code, the required thread.

Article code: 240750CG + Thread code: M14

Order example: **240750CGM14**

**Note:**

Available with the threaded nut M-10 x 1,5 / 3/8 UNF.

MULTITHREAD (see page 9)

Multithread nut (M14 / W5/8)

**Packing:**



Blister



Bulk

**Applications and uses:**

- ▶ Specially designed for High Speed (11.000 r.p.m.) light mini-grinders.
- ▶ Suitable for continuous and frequent brushing (shipyards, metal structures, maintenance welds, etc.).
- ▶ Comfortable use and elimination of human fatigue.
- ▶ Special desing allowing access to angles.



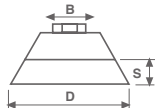


# LAR

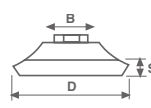
High Speed Line  
(With Twisted Knot Wire)



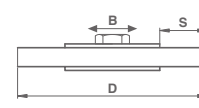
Cup



Cónico



Wheel



Model	ø Exterior (D)	Trim length (S)	Thread (B)	Steel ø0,50 mm. .020" EK	Stainless Steel ø0,50mm. .020" BK	Uts/box	RPM
	mm / "			mm / "	Code		
Cup	65 2.3/4"	22 7/8"	M-14 W-5/8 MR	250601EK	250601BK	12	13000
	75 3"			250701EK	250701BK		
Conical	100 4"	24 1"		CR1810EK	CR1810BK		
	120 4.3/4"			CR1812EK	CR1812BK		
Wheel 18 knots	115 4.1/2"	25 1"		PR115EK	PR115BK		
Wheel 20 knots	115 4.1/2"			PR11520EK	PR11520BK		

\*It is necessary add to the article code, the required thread:

Article code: 250601EK + Thread code: M14

Order example: **250601EKM14**

**Note:**

Available with the threaded nut M-10 x 1,5 / 3/8 UNF.

MULTITHREAD (see page 9)

Multithread nut (M14 / W5/8)

**Packing:**



Blister



Bulk

**Applications and uses:**

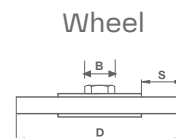
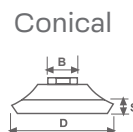
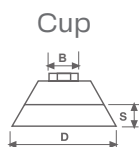
- ▶ Specially designed for High Speed (11.000 r.p.m.) light mini-grinders.
- ▶ Suitable for continuous and frequent brushing (shipyards, metal structures, maintenance welds, etc.).
- ▶ Comfortable use and elimination of human fatigue.
- ▶ Special desing allowing access to angles.



# LAR



High Speed Line  
(abrasive nylon, silicon carbide)



Model	ø Exterior (D)	Trim length (S)	Thread (B)	Abrasive Nylon (NA) Medium Grain 180	Uts/box	RPM
	mm / "	mm / "		Code		
Cup	75 3"	22 7/8"	M-14 W-5/8 MR	240750NA	12	13000
Conical	100 4"	24 1"		CO1510NA		
Wheel	115 4.1/2"	25 1"		PO115NA		

It is necessary add to the article code, the required thread:

Article code: 240750NA + Thread code: M14

Order example: **240750NAM14**

MULTITHREAD (see page 9)

Multithread nut (M14 / W5/8)

## Packing:



Blister

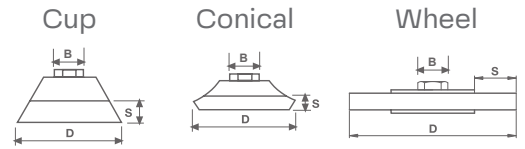


Bulk

## Applications and uses:

- Specially designed for High Speed (11.000 r.p.m.) light mini-grinders.





## High Speed Line (With Crimped Wire)



**NEW**

Model	ø Exterior (D)	Trim length (S)	Shank (B)	Coated steel ø0,30 mm. .012" CG	Stainless steel ø0,30mm. .012" BG	Uts/box	RPM
	mm / "	mm / "		Code	Code		
<b>Cup</b>	<b>75</b> <b>3"</b>	22 7/8"	<b>XLOCK</b>	240750CG	240750BG	12	13000
<b>Conical</b>	<b>100</b> <b>4"</b>	24 1"		CO1510CG	CO1510BG		
<b>Wheel</b>	<b>115</b> <b>4.1/2"</b>	25 1"		PO115CG	PO115BG		

It is necessary add to the article code, the required thread:

Article code: 240750CG + Thread code: XL

Order example: **240750CGXL**



## High Speed Line (With Twisted Knot Wire)

**NEW**

Model	ø Exterior (D)	Trim length (S)	Shank (B)	Steel ø0,50 mm. .020" EK	Stainless steel ø0,50mm. .020" BK	Uts/box	RPM
	mm / "	mm / "		Code	Code		
<b>Cup</b>	<b>65</b> <b>2.3/4"</b>	22 7/8"	<b>XLOCK</b>	250601EK	250601BK	12	13000
	<b>75</b> <b>3"</b>			250701EK	250701BK		
<b>Conical</b>	<b>100</b> <b>4"</b>	24 1"		CR1810EK	CR1810BK		
<b>Wheel</b> <b>18 knots</b>	<b>115</b> <b>4.1/2"</b>	25 1"		PR115EK	PR115BK		
<b>Wheel</b> <b>20 knots</b>	<b>115</b> <b>4.1/2"</b>			PR11520EK	PR11520BK		

### Packing:



Blister



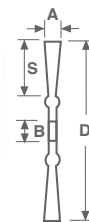
Bulk

**X-LOCK** is a revolutionary system from Bosch Professional that allows you to change accessories for angle grinders with just one click. Fast, reliable and without tools.

- ▶ **COMFORTABLE:** No need for additional tools.
- ▶ **SAFE:** With a simple click you will know that the brush has fitted perfectly.
- ▶ **QUICK:** Brush change in 3 seconds.

# F18 Pipelines

Twist Knot Wheel  
Knot of 6m – 1/4"  
and 8mm. – 5/16"



ø Exterior (D)	Knots	Knot width (A)	Trim length (S)	Thread (B)	Steel ø0,50 mm. .020" EK	Stainless steel ø0,50mm. .020" BK	Uts/box	RPM	
		mm / "	mm / "		Code	Code			
<b>115</b> 4.1/2"	32	6 1/4"	21 3/4"	22 7/8" M-14 W-5/8 MR	18110632EK	18110632BK	10	15000	
		6 1/4"	26 1"		18120632EK	18120632BK		12000	
6 1/4"	34 1.3/8"		18120638EK		18120638BK	9000			
	38	18150638EK	18150638BK						
	50	18150650EK	18150650BK						
	56	18150656EK	18150656BK						
<b>150</b> 6"	30	8 5/16"	34 1.3/8"		18150830EK	18150830BK	10	9000	
		6 1/4"	36 1.3/8"		18170648EK	18170648BK			
	30		30 1.5/32"		18170656EK	18170656BK		8500	
		76 1.5/32"	18170676EK		18170676BK				
<b>175</b> 7"	30	8 5/16"	46 1.3/4"		18170830EK	18170830BK		10	8500
		6 1/4"	30 1.5/32"		18170656EK	18170656BK			
<b>125</b> 5"	38	6 1/4"	26 1"	18120638EK	18120638BK	10	12000		
		8 5/16"	34 1.3/8"	18150638EK	18150638BK				

It is necessary add to the article code, the required arbor hole/thread:

Article code: 18170656EK + Arbor hole/Thread code: MR

Order example: **18170656EKM RB**

**Very important:**

Available with 16mm Arbor hole.

MULTITHREAD (see page 9)

Multithread nut (M14 / W5/8)

## Packing:



Bulk

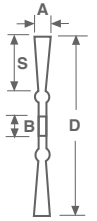
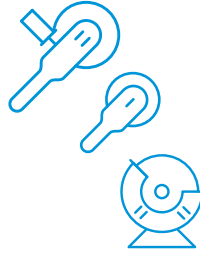
## Applications and uses:

- Specially designed for cleaning welded joints in pipes, in the construction of gas and oil pipelines.



# F18

Twist Knot Wheel  
Knot of 12 mm - 1/2"



ø Exterior (D)	Knots	Knot width (A)	Trim length (S)	Thread (B)	Steel ø0,50 mm. .020" EK	Steel ø0,80 mm. .032" EQ	Stainless steel ø0,50mm. .020" BK	Uts/box	RPM	
					Code	Code	Code			
115 4.1/2"	20	12 1/2"	23 7/8"	22 7/8" M-14 W-5/8 MR	18110120EK	18110120EQ	18110120BK	10	12000	
	22				18110122EK	18110122EQ	18110122BK			
125 5"	22		25 1"		18120122EK	18120122EQ	18120122BK		12000	
	150 6"		24		34 1.3/8"	18150124EK	18150124EQ		18150124BK	9000
28			34 1.3/8"		18150128EK	18150128EQ	18150128BK			
175 7"	28		46 1.3/4"		18170128EK	18170128EQ	18170128BK		8500	
	32		30 1.5/32"		18170132EK	18170132EQ	18170132BK			
200 8"	40		29 1.1/8"		20-22-26-30 36-40-50	18200140EK*	18200140EQ*		18200140BK*	4500
250 10"	40		54 2.1/8"		3/4"-7/8"-1"- 1.3/16" 1.3/8"-1.5/8"-2"	18250140EK*	18250140EQ*		18250140BK*	4500

It is necessary add to the article code, the required arbor hole/thread:

Article code: 18150124EK + Arbor hole/Thread code: 22

Order example: **18150124EK22**

(\*) Diameter 200 mm./8" and 250 mm./10" only available with the following plain holes: 20-22-26-30-36-40-50mm. - 3/4"-7/8"-1"-1.3/16"/1.3/8"-1.5/8"-2"

### Very important:

Available with 16mm Arbor hole.

MULTITHREAD (see page 9)

Multithread nut (M14 / W5/8)

### Packing:



Bulk



Box

### Applications and uses:

- ▶ Removal of welding and forging scale. Retreading.
- ▶ Recovery of bottles.
- ▶ Cleaning of joints in roads.
- ▶ Large removing capacity.
- ▶ Option to from rollers by gang mounting individual brushes.
- ▶ Theres brushes are used in both fixed and portable machines (providing that they do not exceed 175 mm. diameter and only have one row).

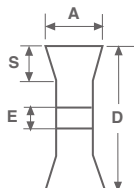




# F15



Crimped wire wheel  
With multi-fitting



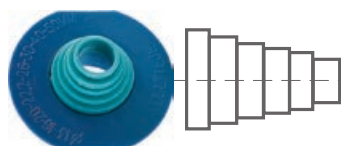
**Very important:**

Available with 32mm metallic bore.

**It is necessary add to the article code, the required arbor hole:**

Article code: 151505CG + Arbor hole code: ME

Order example: **151505CGME**



**MULTI-FITTING (ME):**

Only for fixed machines. It allows the fixing of any F-15 brush onto any of the 8 different bore sizes: 13, 16, 20, 22, 26, 30, 40 and 50.

ø Exterior (D)	Rows	Width (A)	Trim length (S)	Multi-fitting (E)	Coated steel ø0,30 mm. .012" CG	Stainless steel ø0,30mm. .012" BG	Uts/box	RPM		
					Code	Code				
mm / "		mm / "	mm / "	mm / "						
<b>100</b> <b>4"</b>	5	16 - 5/8"	18 11/16"	13-16-20 22-26-30	151005CG	151005BG	1	6000		
	8	22 - 7/8"			151008CG	151008BG				
	10	28 - 1.1/8"			151010CG	151010BG				
<b>125</b> <b>5"</b>	5	20 - 3/4"	30 1.5/32"	1/2"-5/8"- 3/4" 7/8"-1"- 1.3/16"	151205CG	151205BG			6000	
	8	25 - 1"			151208CG	151208BG				
	10	32 - 1.5/32"			151210CG	151210BG				
<b>150</b> <b>6"</b>	5	20 - 3/4"	28 1.1/8"	12-16-20- 22-26 30-40-50	151505CG	151505BG				6000
	8	25 - 1"			151508CG	151508BG				
	10	32 - 1.1/4"			151510CG	151510BG				
<b>175</b> <b>7"</b>	5	22 - 7/8"	40 1.1/2"	1/2"-5/8"- 3/4" 7/8"-1"- 1.3/16" 1,1/2"-2"	151705CG	151705BG				
	8	28 - 1.1/8"			151708CG	151708BG				
	10	35 - 1.3/8"			151710CG	151710BG				
<b>200</b> <b>8"</b>	5	22 - 7/8"	40 1.1/2"	1/2"-5/8"- 3/4" 7/8"-1"- 1.3/16" 1,1/2"-2"	152005CG	152005BG	4500			
	8	30 - 1.5/32"			152008CG	152008BG				
	10	35 - 1.3/8"			152010CG	152010BG				
<b>250</b> <b>10"</b>	5	25 - 1"	65 2.3/4"	1/2"-5/8"- 3/4" 7/8"-1"- 1.3/16" 1,1/2"-2"	152505CG	152505BG		3600		
	8	35 - 1.3/8"			152508CG	152508BG				
	10	38 - 1.1/2"			152510CG	152510BG				

**Applications and uses:**

- ▶ Removal of rust, burrs, paint, scale, cleaning cast parts, brushing skins and leathers.
- ▶ Preparation of casings for retreading.
- ▶ The brushing of stainless steel surfaces should be done with stainless wire.
- ▶ When anti-spark material is required, brass wire must be used.

**Packing:**



Box





## F15 Crimped wire wheel with threaded nut

ø Exterior (D)	Rows	Width (A)	Trim length (S)	Thread (E)	Coated steel ø0,30 mm. .012" CG	Uts/box	RPM
		mm / "	mm / "		mm / "		
<b>150</b> <b>6"</b>	5	20 3/4"	28	M-14 W-5/8 MR	151505CG	1	6000
<b>175</b> <b>7"</b>			40		151705CG		6000
<b>200</b> <b>8"</b>			40		152005CG		4500

It is necessary add to the article code, the required thread:

Article code: 151705CG + Thread code: M14

Order example: **151705CGM14**



## F15 Key Duplicating Machines

Model	ø Exterior (D)	Rows	Width (A)	Trim length (S)	Arbor hole (E)	Coated steel ø0,30 mm. .012" CG	Abrasive Nylon NA	Uts/box
	mm / "		mm / "	mm / "	mm / "	Code	Code	
<b>F-15</b>	<b>75 / 3"</b>	4	14 / 9/16"	22 / 7/8"	10 / 3/8"	150704CG10		25
<b>F-15</b>	<b>100 / 4"</b>	3	12 / 1/2"	18 / 11/16"	13 / 1/2"	151003CG13		
<b>BO</b>	<b>75 / 3"</b>	-	7 / 1/4"	16 / 5/8"	13 / 1/2"	BO0703		
<b>F-17</b>	<b>75 / 3"</b>	4			13 / 1/2"		170704NA13	

It is necessary add to the article code, the required arbor hole:

Article code: 151003CG + Arbor hole code: 13

Order example: **151003CG13**



## F15 Band Saw Cleaning

Model	ø Exterior (D)	Rows	Width (A)	Trim length (S)	Arbor hole (E)	Coated steel ø0,30 mm. .012" CG	Uts/box
	mm / "		mm / "	mm / "	mm / "	Code	
<b>F-15</b>	<b>75 / 3"</b>	4	14 / 9/16"	22 / 7/8"	10 / 3/8"	150704CG10	25
	<b>100 / 4"</b>	6	20 / 3/4"	34 / 1.3/8"	13 / 1/2"	E151006CG13	
	<b>100 / 4"</b>	8	25 / 1"	34 / 1.3/8"	13 / 1/2"	E151008CG13	

It is necessary add to the article code, the required arbor hole:

Article code: 150704CG + Arbor hole code: 10

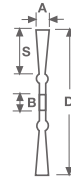
Order example: **150704CG10**

# F17

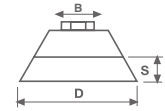
Industrial Line  
(abrasive nylon, silicon carbide)



Wheel



Cup



## Wheel

ø Exterior (D)	Rows	Width (A)	Trim length (S)	Multi-fitting (E)	Abrasive Nylon (NA) Medium Grain 180	Uts/box	RPM
		mm / "	mm / "	mm / "	Code		
<b>150</b> <b>6"</b>	4	13 / 1/2"	28 / 1.1/8"	13-16-20-22-26 30-40-50 mm	171504NA	1	6500
	8	25 / 1"	28 / 1.1/8"		171508NA		
<b>175</b> <b>7"</b>	4	16 / 5/8"	40 / 1.5/8"	1/2"-5/8"-3/4" 7/8"-1"-1.3/16"	171704NA		6500
	8	28 / 1.1/8"	40 / 1.5/8"		171708NA		
<b>200</b> <b>8"</b>	4	16 / 5/8"	40 / 1.5/8"	1.1/2"-2"	172004NA		4500
	8	28 / 1.1/8"	40 / 1.5/8"		172008NA		

It is necessary add to the article code, the required arbor hole:

Article code: 171504NA + arbor hole code: ME

Order example: **171504NAME**

## Cup

ø Exterior (D)	Trim length (S)	Eje Rosca (B)	Abrasive Nylon (NA) Medium Grain 180	Uts/box	RPM
	mm / "		Code		
<b>100</b> <b>4"</b>	30 / 1.3/16"	16-22 5/8" - 7/8"	17100NA	1	8500
<b>125</b> <b>5"</b>	30 / 1.3/16"	M-14 - W-5/8 MR	17125NA		6500

It is necessary add to the article code, the required thread:

Article code: 17100NA + thread code: M14

Order example: **17100NAM14**

### Technical Characteristics:

- ▶ The silicon carbide impregnated filaments are specially treated to work both on wet and dry surfaces.
- ▶ Brushing with nylon abrasive does not scratch or alter the dimensions of the parts.
- ▶ The filaments flex and penetrate at all angles allowing parts with irregular shapes to be brushed.
- ▶ If some cooling systems allow speeds to be reached that are initially greater than those recommended, the speed indicated in the table must never be exceeded.

# F26



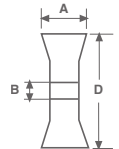
## Encapsulated

For use on electric or pneumatic portable machines



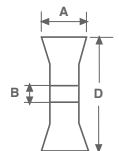
### Crimped wire wheel

ø Exterior (D) mm / "	Width (A) mm / "	Thread (B)	Coated steel ø 0.30mm .012" CG	Uts/box	RPM
			Code		
100 4"	6 1/4"	22 7/8" M-14 W-5/8 MR	26100CG	10	12000
115 4.1/2"			26115CG		12000
175 7"			261703CG		8500



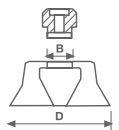
### Crimped with twisted knot wire

ø Exterior (D) mm / "	Width (A) mm / "	Thread (B)	Steel 0,50mm .020" EK	Uts/box	RPM
			Code		
175 7"	6 / 1/4"	22 - 7/8" M-14 - W-5/8 MR	26176056EK	10	8500



### Crimped wire cup

ø Exterior (D) mm / "	Thread (B)	Coated steel 0,30mm .012" CG	Uts/box	RPM
		Code		
75 3"	M-14 W-5/8 MR	260750CG	12	13000



\*It is necessary add to the article code, the required arbor hole/thread:

Article code: 260750CG + Arbor hole/Thread code: M14

Order example: **260750CGM14**

#### Very important:

Available with 22mm arbor hole.

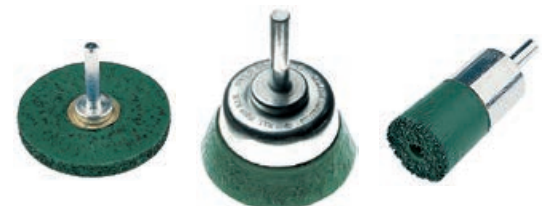
#### Applications and uses:

- ▶ Specially designed for OFFSHORE oil and gas pipeline construction.
- ▶ Suitable for work in marine environments with high humidity.
- ▶ The plastic bending protects the oxidation of the wire, maintaining all its properties intact.

# Gogor

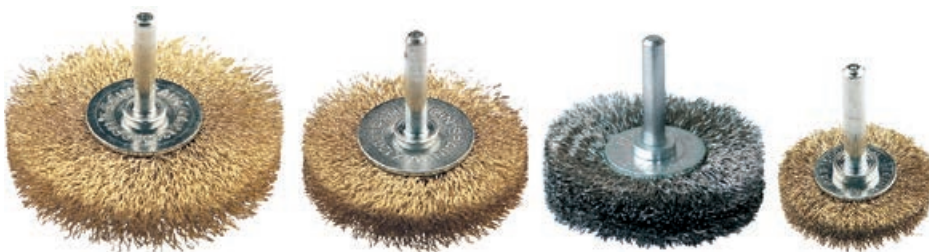
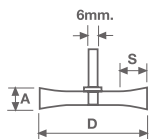
For use in electric or pneumatic drills

Model	ø Exterior (D)	Code	Uts/box	RPM
	mm / "			
Wheel	65	GBE065	12	15000
Cup	50	GTA050		
End Brush	22	GBR022		
End Brush	30	GBR030		



# F21

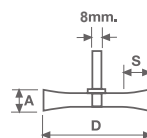
Industrial Wheel  
with 6 mm-1/4" shank



ø Exterior (D)	Trim length (S)	Width (A)	Steel 0,20mm .008" AE	Coated steel ø mm.		Stainless steel ø mm.		Uts/box	RPM	
				0,20mm .008" CE	0,30mm .012" CG	0,20mm .008" BE	0,30mm .012" BG			
mm / "	mm / "	mm / "	Code	Code	Code	Code	Code			
20 / 3/4"	4 / 5/32"	12 1/2"	21023AE			21023BE		25	20000	
30 / 1.3/16"	4 / 5/32"			21034CE			21034BE			20000
40 / 1.9/16"	9 / 3/8"			21044CE			21044BE			20000
50 / 2"	13 / 1/2"				21054CG				21054BG	15000
60 / 2.3/8"	14 / 5/8"				21064CG				21064BG	15000
75 / 3"	22 / 7/8"				21074CG				21074BG	15000
100 / 4"	27 / 1.1/8"				21104CG				21104BG	15000

# F21 NEW

Industrial Wheel  
with 8 mm-5/16" shank



ø Exterior (D)	Trim length (S)	Width (A)	Coated steel 0,30mm .012" CG	Stainless steel. 0,30mm .012" BG	Uts/box	RPM
mm / "	mm / "	mm / "	Code	Code		
60 2.3/8"	14 5/8"	27 1.1/8"	21061208CG	21061208BG	12	4500
75 3"	22 7/8"		21071208CG	21071208BG		
100 4"	27 1.1/8"		21101208CG	21101208BG		

### Applications and uses:

- Cleaning of rust, paint, scales, burrs, and general adhesions, pipe interiors, moulds, etc.
- For use in electric and pneumatic drills.

# F22

End brushes with 6 mm-1/4" shank



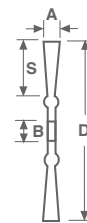
Model	ø Exterior (D)	Trim length (S)	Coated steel		Stainless steel	Coated steel cable crimped	Uts/box	RPM
			0,30mm .012" CG	0,40mm. .016" CI	0,30mm .012" BG	2+2x0,32 mm CEA		
			Code	Code	Code	Code		
1	12 / 1/2"	20 / 3/4"	22112CG		22112BG		25	20000
2	12 / 1/2"	20 / 3/4"	22212CG		22212BG			
3	26 / 1"	30 / 1.3/16"	22326CG		22326BG	22326CEA		
4	26 / 1"	30 / 1.3/16"	22426CG		22426BG	22426CEA		
5	26 / 1"	30 / 1.3/16"	22526CG		22526BG	22526CEA		
6	30 / 1.3/16"	30 / 1.3/16"	22630CG		22630BG			
7	12 / 1/2"	25 / 1"		22712CI				
8	12 / 1/2"	30 / 1.3/16"		22812CI				
9	19 / 3/4"	25 / 1"	22919CG		22919BG			

# F16 Cablecillo

Wheel brush with CABLE crimped wire



ø Exterior (D)	Rows	Width (A)	Trim length (S)	Multi-fitting (B)	Cable crimped ø mm. 2+2 x 0,32 CEA	Uts/box	RPM
mm / "		mm / "	mm / "		Code		
150 / 6"	5	22 / 7/8"	28 / 1.1/8"	13-16-20-22	161505CEA	1	6500
175 / 7"			40 / 1.1/2"	26-30-40-50	161705CEA		6500
200 / 8"			40 / 1.1/2"	1/2"-5/8"-3/4" 7/8"-1"-1.3/16"	162005CEA		4500

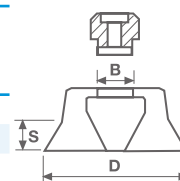


It is necessary add to the article code, the required arbor hole: Article code: 161705CEA + Thread code: ME. Order example: **161705CEAME**

Cup brush with CABLE crimped wire



ø Exterior (D)	Trim length (S)	Thread (B)	Cable crimped ø mm. 2+2 x 0,32 CEA	Uts/box	RPM
mm / "	mm / "		Code		
75 / 3"	22 / 7/8"	22 / 7/8"	160750CEA	1	13000
100 / 4"	30 / 1.3/16"	M-14 W-5/8	161000CEA		8500
125 / 5"	30 / 1.3/16"	MR	161250CEA		8500



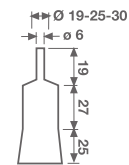
It is necessary add to the article code, the required thread: Article code: 161000CEA + Thread code: M14. Order example: **161000CEAM14**

# F22/BT/TAT

Twist Knot wire End Brush  
with 6 mm-1/4" shank



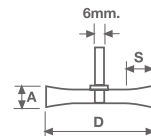
Model	ø Exterior (D)	Trim length (S)	Stainless Steel ø0,50mm .020" BK	Steel ø 0,50mm .020" EK	Uts/box	RPM
	mm / "	mm / "	Code	Code		
10	19 / 3/4"	25 / 1"	221019BK	221019EK	25	20000
	25 / 1"	25 / 1"	221025BK	221025EK		
	30 / 1.3/16"	25 / 1"	221030BK	221030EK		



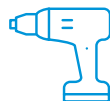
Twist Knot wire Wheel  
with 6 mm-1/4" shank



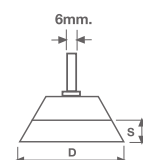
ø Exterior (D)	Trim length (S)	Width (A)	Knots	Steel ø 0,50mm .020" EK	Uts/box	RPM
mm / "	mm / "	mm / "		Code		
75 3"	18 11/16"	10 3/8"	15	BT07EK	12	20000



Twist Knot wire Cup NEW  
with 6 mm-1/4" shank



ø Exterior (D)	Trim length (S)	Steel ø 0,50mm .020" EK	Stainless Steel ø0,50mm .020" BK	Uts/box	RPM
mm / "	mm / "	Code	Code		
65 2.3/4"	20 3/8"	TAT65EK	TAT65BK	12	4500



## Applications and uses:

- ▶ Large removing capacity.
- ▶ Removal of rust, paint, scales, burrs, and general adhesions, pipe interiors, moulds, etc.
- ▶ For use in electric and pneumatic drills.





# C DIY brushes



## BE-TA



DIY.  
Wheel and cup brush  
with 6 mm-1/4" shank



Model	ø Exterior (D)	Coated steel mm / "	Presentation		Uts/box	RPM
	mm / "		Bulk	Blister		
BE Circular con espiga	50 / 2"	0,30 .012"	BE0530	BE0530D	25	4500
	60 / 2.3/8"		BE0630	BE0630D		
	75 / 3"		BE0730	BE0730D		
	100 / 4"		BE1030	BE1030D		
TA Taza	50 / 2"		TA5030	TA5030D	25	4500
	75 / 3"		TA7530	TA7530D		
	85 / 3.3/8"		TA8030	TA8030D		

# BR-BO

End Brush with 6 mm-1/4" shank  
Wheel with 13 mm-1/2" hole



Model	ø Exterior (D)	Coated steel mm / "	Presentation		Uts/box	RPM
	mm / "		Code BULK	Code Blister		
<b>BR Brocha</b>	<b>26 / 1"</b>	0,30 .012"	BR2630	BR2630D	25	4500
<b>BO Circular</b>	<b>75 / 3"</b>		BO0703	BO0703D		
	<b>100 / 4"</b>		BO1003	BO1003D	25	4500
	<b>125 / 5"</b>		BO1203	BO1203D		

# FBE-FTA-FBR

DIY Abrasive Nylon  
with 6 mm-1/4" shank

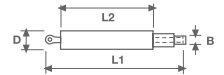


Model	ø Exterior (D)	Filament		Presentation		Uts/box	RPM
	mm / "	Colour	Grain	Code BULK	Code Blister		
<b>Circular</b>	<b>75 / 3"</b>	<b>Rojo</b>	<b>80</b>	FBE075	FBE075D	12	4500
		<b>Azul</b>	<b>150</b>	FBE751	FBE751D		
	<b>100 / 4"</b>	<b>Rojo</b>	<b>80</b>	FBE100	FBE100D		
		<b>Azul</b>	<b>150</b>	FBE101	FBE101D		
<b>Taza</b>	<b>50 / 2"</b>	<b>Rojo</b>	<b>80</b>	FTA050	FTA050D		
		<b>Azul</b>	<b>150</b>	FTA501	FTA501D		
	<b>75 / 3"</b>	<b>Rojo</b>	<b>80</b>	FTA075	FTA075D		
		<b>Azul</b>	<b>150</b>	FTA751	FTA751D		
<b>Brocha</b>	<b>22 / 7/8"</b>	<b>Rojo</b>	<b>80</b>	FBR022	FBR022D		
		<b>Azul</b>	<b>150</b>	FBR221	FBR221D		

D

# Tube brushes

## F13



### Coated Steel Tube Brushes

ø Exterior (D)	Total length (L1)	Useful length (L2)	Fastening Thread (B)	Coated steel		Uts/box
				0,30mm .012" CG	0,40mm .016" CI	
mm / "	mm / "	mm / "		<b>Code</b>	<b>Code</b>	
<b>10 / 3/8"</b>	140 5.1/2"	90 4.3/8"	W-1/4" NPT 1/8"	13010CG	13025CI 13030CI 13040CI 13050CI 13060CI 13075CI	12
<b>13 / 1/2"</b>				13013CG		
<b>16 / 5/8"</b>				13016CG		
<b>18 / 11/16"</b>				13018CG		
<b>20 / 3/4"</b>				13020CG		
<b>25 / 1"</b>	190 7.1/2"	110 4.3/8"	W-1/2" NPT 1/4"			
<b>30 / 1.3/16"</b>						
<b>40 / 1.9/16"</b>						
<b>50 / 2"</b>						
<b>60 / 2.3/8"</b>						
<b>75 / 3"</b>						

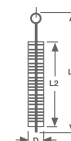
#### Applications and uses:

- ▶ Removal of rust, residues, and adhesions in the interior of pipes and holes (ships, refineries, sugar mills, heating, manufacture of shock absorbers, etc).
- ▶ Cleaning of threaded holes.
- ▶ Are used by hand as well as mounted to fixed or portable machines.
- ▶ The fixing element is a screw situated at the end of the brush.

# Tube brushes



## Nylon and Hair Tube brushes with loop



∅ Exterior (D)	Total length (L1)	Useful length (L2)	Nylon ∅ 0.20 mm. .008" JE	Uts/box
mm / "	mm / "	mm / "	Code	
<b>6 1/4"</b>	310 10.3/8"	100 4"	13006JE	12
<b>8 / 5/16"</b>			13008JE	
<b>10 / 3/8"</b>			13010JE	
<b>12 / 1/2"</b>			13012JE	
<b>15 / 5/8"</b>			13015JE	
<b>20 / 3/4"</b>			13020JE	
<b>25 / 1"</b>			13025JE	
<b>30 / 1.3/16"</b>			13030JE	

## Bottle Cleaner

∅ Exterior (D)	Total length (L1)	Useful length (L2)	Hair	Uts/box
mm / "	mm / "	mm / "	Code	
<b>70</b> <b>2.3/4"</b>	380 15"	100 4"	13070P	12

## Radiator Cleaner

∅ Exterior (D)	Total length (L1)	Useful length (L2)	Hair	Uts/box
mm / "	mm / "	mm / "	Code	
<b>75</b> <b>3"</b>	700 28"	120 / 4.3/4"	13075RP	12

## Wire tube brushes with loop

∅ Exterior (D)	Total length (L1)	Useful length (L2)	Steel ∅ 0.12 mm. AC	Brass ∅ 0.15 mm. HD	Uts/box
mm / "	mm / "	mm / "	Code	Code	
<b>6 1/4"</b>	310 10.3/8"	100 4"	13006AC	13006HD	12
<b>8 / 5/16"</b>			13008AC	13008HD	
<b>10 / 3/8"</b>			13010AC	13010HD	
<b>12 / 1/2"</b>			13012AC	13012HD	
<b>15 / 5/8"</b>			13015AC	13015HD	
<b>20 / 3/4"</b>			13020AC	13020HD	
<b>25 / 1"</b>			13025AC	13025HD	
<b>30 / 1.3/16"</b>			13030AC	13030HD	



### Applications and uses:

- ▶ Removal of rust, residues, and adhesions in the interior of pipes and holes (ships, refineries, sugar mills, heating, manufacture of shock absorbers, etc).
- ▶ Cleaning of threaded holes.
- ▶ Are used by hand as well as mounted to fixed or portable machines.
- ▶ The fixing element is a screw situated at the end of the brush.

# Chimney cleaning brushes



BRICK duct Chimney Cleaner Kit.



**KIT content:**

- ▶ Metal circular hedgehog brush ø 200mm.
- ▶ 4 Rods of 1.45m. Rod reach: 5.8m

Code	Description	Ut./Box
29KIT200AC	Metallic Chimney Cleaner Kit. ø200mm – 8"	1



Chimney Cleaner Kit for METALLIC ducts



**KIT content:**

- ▶ Yellow nylon circular hedgehog brush ø 200mm.
- ▶ 4 Rods of 1.45m. Rod reach: 5.8m

Code	Description	Ut./Box
29KIT200NV	Nylon Chimney Cleaner Kit. ø200mm – 8"	1



PELLET stove cleaner kit



- ▶ Nylon brush ø 80mm.
- ▶ 3m flexible rod.
- ▶ Plastic handle

Code	Description	Ut./Box
29KIT080NY	Pellet stove cleaner kit. Ø80mm – 3.1/4"	1



# Brushes for grass trimmers



ø Exterior (D)	Knots	Trim length (S)	Arbor hole (E)	Steel 0,50mm .020" EK	Uts/box
		mm / "	mm / "	Code	
200 / 8"	36	37	25,4 / 1" (*)	2820136EK25	1
			20 / 3/4"	2820136EK20	

(\*) With adapter from 25.4mm to 20m.

**Technical characteristics:**

- ▶ Special conical design
- ▶ High removal
- ▶ 36 knots
- ▶ Ecologic
- ▶ The substitute of chemical herbicides.

**Applications:**

- ▶ Remove easily and quickly on street, walkways, grass pavers...
- ▶ Cleaning of wide floors like courtyards or parkings.
- ▶ Recommended string trimmer motor size: 1,6HP or more.

## E

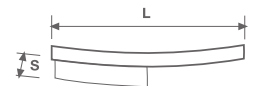
# Hand brushes



## Hand brushes

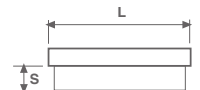


With wooden handle



Rows	Knots	Wood length (L)	Trim length (S)	Coated steel ø 0,40 mm. .016" CI	Stainless Steel ø 0,40 mm. .016" BI	Brass ø 0,40mm. .016" HI	Uts/box
		mm / "	mm / "	Code	Code	Code	
3	40	290 / 11.3/8"	30 / 1.3/16"	S325CI	S325BI	S325HI	32
4	48	290 / 11.3/8"	30 / 1.3/16"	S430CI	S430BI	S430HI	28
5	60	290 / 11.3/8"	30 / 1.3/16"	S535CI	S535BI	S535HI	24

Straight back wooden handle



Rows	Knots	Wood length (L)	Trim length (S)	Coated steel ø 0,40 mm. .016" CI	Uts/box
		mm / "	mm / "	Code	
5	64	180 / 7"	30 / 1.3/16"	S550CI	36
6	70	200 / 8"	35 / 1.3/8"	S660CI	26

Straight back wooden handle - "Violon type"

Rows	Knots	Wood length (L)	Trim length (S)	Coated steel ø 0,40 mm. .016" CI	Uts/box
		mm / "	mm / "	Code	
5 (Violón)	62	200 / 8"	35 / 1.3/8"	S555CI	26

### Applications and uses:

- ▶ Cleaning of scales on welded, cast or forged parts, difficult tasks that are resistant to cleaning.
- ▶ Treating wood and stone surfaces.
- ▶ Cleaning of all types of adhesions, paint and rust in general.
- ▶ Brushing stainless steel surfaces, the use of stainless wire is recommended.
- ▶ Cleaning of anti-spark materials always use brass wire.



# SPID



116CG Coated Steel



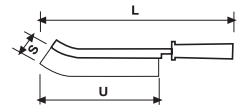
116BG Stainless Steel



116HG Brass



116JQ Nylon



## Plastic handle

Total length (L)	Useful length (U)	Width	Trim length (S)	Coated steel 0,30mm .012" CG	Stainless steel 0,30mm .012" BG	Brass 0,30mm .012" HG	Nylon 0,80mm .032" JQ	Uts/box
mm / "	mm / "	mm / "	mm / "	<b>Code</b>	<b>Code</b>	<b>Code</b>	<b>Code</b>	
260 10.3/8"	130 5.1/4"	16 5/8"	28 1.1/8"	116CG	116BG	116HG	116JQ	24

### Applications and uses:

- ▶ For cleaning of all types of adhesions, paints and rust.
- ▶ For accessing tight spots and difficult to access areas we recommend the use of the Spid model.
- ▶ For brushing stainless steel surfaces the use of stainless wire is recommended.
- ▶ For the cleaning of anti-spark materials always use brass wire.



# Wire and Sweeping Broom Brushes



## Wire broom brushes

Wood length (L)	Wood width	Rows	Knots	Trim length (S)	Stick hole	Coated steel 0,40mm .016" CI	Uts/box
mm / "	mm / "			mm / "	mm / "	Code	
205 / 8.1/16"	70 / 2.3/4"	6	80	50 / 2"	22 / 7/8"	<b>670CI</b>	10
205 / 8.1/16"	70 / 2.3/4"	7	98	50 / 2"	22 / 7/8"	<b>770CI</b>	10
360 / 14.5/32"	65 / 2.3/4"	7 x 24	178	50 / 2"	Flat wood	<b>765CI</b>	24

## Sweeping broom brushes

Wood length (L)	Wood width	Trim length (S)	Fibre	Density	Code	Uts/box
mm / "	mm / "	mm / "				
500 / 20"	65 / 2.3/4"	95 / 3.3/4"	PVC	Medium	<b>5001</b>	24
500 / 20"	65 / 2.3/4"	95 / 3.3/4"	Polypropylene	High	<b>5003</b>	18
520 / 20"	65 / 2.3/4"	60 / 2.3/8"	Hair	Very High	<b>5005</b>	12
270 / 10.3/4"	90 / 3.5/8"	60 / 2.3/8"	Hair	High	<b>1025</b>	12

## Accessories: Stick

ø Stick	Length	Material	For use with code	Code
mm / "	mm / "			
22 / 7/8"	1150 / 45.1/4"	Wood	670CI - 770CI	<b>2211</b>
28 / 1.1/8"	1200 / 47.1/4"		For use with the brace G765 in the models: 5001 / 5003 / 5005 / 765CI	<b>2812</b>
18 / 11/16"	Teles. 1100-1900	Metallic	1025	<b>1900</b>

## Brace

For use with stick code 2812 in the models:	Code
5001 / 5003 / 5005 / 765CI	<b>G765</b>

## Applications and uses:

- Because of its strength it is very suitable for vigorous sweeping in workshops, industrial buildings, boat decks, blocks, public works, etc.

# Hand brushes



Ergonomic Spark Plug Brush



Spark Plug Brush



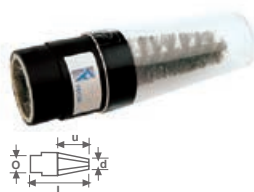
Jeweller



File Card



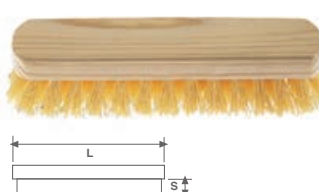
Battery Cleaner



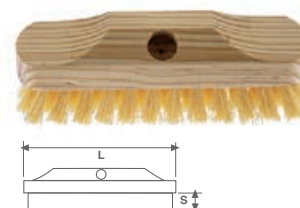
Baker



Plastic fibre 5100



Plastic fibre 5120



## Hand brushes (various)

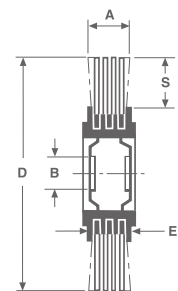
Model	Stick length (L)	Rows	Trim length (S)	Width (A)	Arbor hole Thread	Material	Code	Uts/box
	mm / "		mm / "	mm / "				
<b>Ergonomic Spark Plug Brush</b>	175 / 7"	–	15 / 5/8"	13 / 1/2"	–	Brass Inox	<b>08315H</b> <b>08315B</b>	24
<b>Spark Plug Brush</b>	135 / 5.5/16"	–	15 / 5/8"	15 / 5/8"	–	Steel Brass	<b>0915A2D</b> <b>0915H2D</b>	Blister 2 units. 24 sets
<b>Jewell</b>	230 / 9"	4	15 / 5/8"	20 / 3/4"	–	Brass	<b>1204H</b>	12
<b>File Card</b>	190 / 7.1/2"	–	15 / 5/8"	55 / 2.5/32"	–		<b>1100</b>	60
<b>Battery cleaner</b>	120 / 4.3/4"	–	–	25 / 1"	–	Steel	<b>1000</b>	12
<b>Baker</b>	280 / 11"	–	50 / 2"	46 / 1.3/4"	–	Hair	<b>546P</b>	24
<b>Plastic Fibre</b>	160 / 6.3/8"	4 x 9	25 / 1"	50 / 2"	–	Mexil	<b>4900</b>	36
	215 / 8.5/8"	4 x 13	30 / 1.3/16"	50 / 2"	–		<b>5100</b>	24
	220 / 8.3/4"	5 x 13 (Buque)	30 / 1.3/16"	60 / 2.3/8"	22 / 7/8"		<b>5120</b>	24
Threaded stick of Ø 22 for the brush Cod. 5120							<b>2200</b>	

### Applications and uses:

- ▶ Mod. ERGONOMIc SPARK PLUG: Ergonomical, performance. The bristle allows a cleaning of joints which are hard to reach.
- ▶ Mod. SPARK PLUG: Cleaning of spark plugs, suede footwear, jeweller, electronics, do-it-yourself, etc.
- ▶ Mod. JEWELLER: For cleaning jeweller, electronics, suede footwear and suede garments.
- ▶ Mod. FILE CARD: Cleaning files.
- ▶ Mod. BATTERY CLEANER: For cleaning car battery terminals and clamp connectors.
- ▶ Mod. BAKER: Cleaning machines, work places, furniture, home, car, bakeries, cake shops, etc.

F

# Deburring and Wood finishing brushes



## Brushes for deburring machines



Ø Exterior (D)	Rows	Width (A)	Width (EB)	Trim length (S)	Coated steel			Stainless steel			Coated steel cable crimped	RPM
					0,20mm .008" CE	0,30mm .012" CG	0,50mm .020" CK	0,20mm .008" BE	0,30mm .012" BG	0,50mm .020" BK		
mm / "		mm / "	mm / "	mm / "	Code	Code	Code	Code	Code	Code	Code	
250 10"	18	60 2.3/8"	58	47,5 1.7/8"	152518CE	152518CG	152518CK	152518BE	152518BG	152518BK	162518CEA	3600
250 10"	25	95 3.3/8"	93	47,5 1.7/8"	152525CE	152525CG	152525CK	152525BE	152525BG	152525BK	162525CEA	
300 12"	15	60 2.3/8"	55	72,5 2.3/4"	153015CE	153015CG	153015CK	153015BE	153015BG	153015BK	163015CEA	
300 12"	24	95 3.3/8"	90	72,5 2.3/4"	153024CE	153024CG	153024CK	153024BE	153024BG	153024BK	163024CEA	

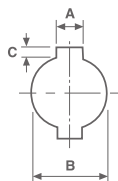
It is necessary add to the article

code, the required arbor hole:

Article code: 152518CG +

Arbor hole code: 51CH

Order example: **152518CG51CH**



### Keyway diameter

Ø (B)	Keyway		Code
	(A)	(C)	
mm / "	mm / "	mm / "	
50,8 / 2"	13,2 / 1/2"	7,1 / 9/32"	51CH
52,9 / 2.3/32"	13,5 / 1/2"	6,4 / 1/4"	53CH
54,7 / 2"	13,6 / 1/2"	5,8 / 1/4"	55CH
80 / 3.1/8"	13,5 / 1/2"	7.5 / 9/32"	80CH
82,5 / 3.1/4"	13,2 / 1/2"	6,4 / 1/4"	83CH

### Plain hole diameter

Ø (B)	Code
mm / "	
50 / 2"	50
63 / 2.1/2"	63
100 / 4"	100

### Applications and uses:

- ▶ These brushes are used for deburring tube ends and profile and are characterized by its high density.
- ▶ As brush manufacturers we can attend to the most exceptional requirements. Our technical department advises you on the solution to your problems, jointly developing the brush design, with the aim of finding the most favourable and optimal solution.

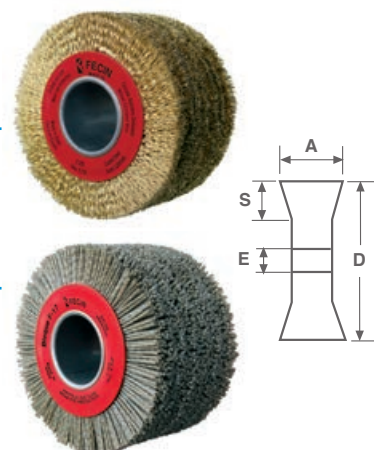




## Wood finishing brushes

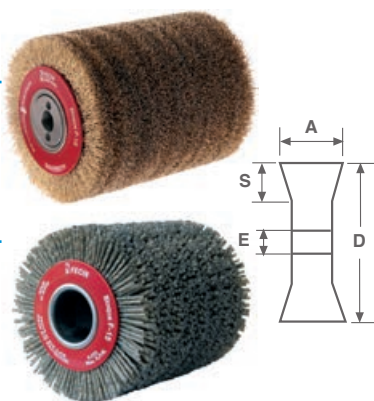
### For fixed machines

∅ Exterior mm. (D)	Width (A)	Arbor hole (E)	Cable crimped 2+2x0,32 CEA	Abrasive Nylon Grain 46 NAU	RPM
mm / "	mm / "	mm / "	<b>Code</b>	<b>Code</b>	
150 6"	85 3.3/8"	50 2"	161528CEA50	171529NAU50	6000
150 6"	120 4.3/4"	50 2"	161541CEA50	171541NAU50	



### For portable machines

∅ Exterior mm. (D)	Width (A)	Arbor hole (E)	Coated steel 0.30mm .012" CG	Abrasive Nylon Grain 46 NAU	RPM
mm / "	mm / "	mm / "	<b>Code</b>	<b>Code</b>	
100 4"	100 4"	19 1/4"	151040CG19CH	171038NAU19CH	6000
	120 4.3/4"	12 1/2"	151045CG12CH	171045NAU12CH	



#### Applications and uses:

- ▶ These brushes are used to remove the soft parts of timber, to make a wooden surface look old or for giving rustic effect. The brushes can be used in automatic machines (type Tupi) or portable ones which use wire brushes to remove the soft parts of timber and showing up the hard ones.
- ▶ For choosing the right brush is necessary to take in mind whether the timber is of hardwood (oak) or of softwood (pine).

- ▶ Brass coated steel wire brushes are used for roughing and abrasive nylon brushes to obtain the perfect finish.
- ▶ **As brush manufacturers we can attend to the most exceptional requirements. Our technical department advises you on the solution to your problems, jointly developing the brush design, with the aim of finding the most favourable and optimal solution.**



# G Exhibitors



## DIY Box

Set of brushes with 6 mm-1/4" shank for use in drills

Dimensions	Code	Contents		Qty.
		Code	Description	
34x34x10 cm.	0606	BE0530	Circular 50 / 2"	6
		BE0730	Circular 75 / 3"	6
		BE1030	Circular 100 / 4"	6
		TA5030	Taza 50 / 2"	6
		TA7530	Taza 75 / 3"	6
		BR2630	Brocha 26 / 1"	6



## DIY Exhibitor

Assortment of brushes in blister packs with a 6 mm-1/4" shank for use in drills

Dimensions	Code	Contents		Qty.
		Code	Description	
69x44x32 cm.	1206	BE0530D	Circular 50 / 2"	12
		BE0730D	Circular 75 / 3"	12
		BE1030D	Circular 100 / 4"	12
		TA5030D	Taza 50 / 2"	12
		TA7530D	Taza 75 / 3"	12
		BR2630D	Brocha 26 / 1"	12



# High Speed Exhibitor

Assortment of brushes with thread in blister, specially designed for low weight and high speed mini grinders (13.000 r.p.m.)

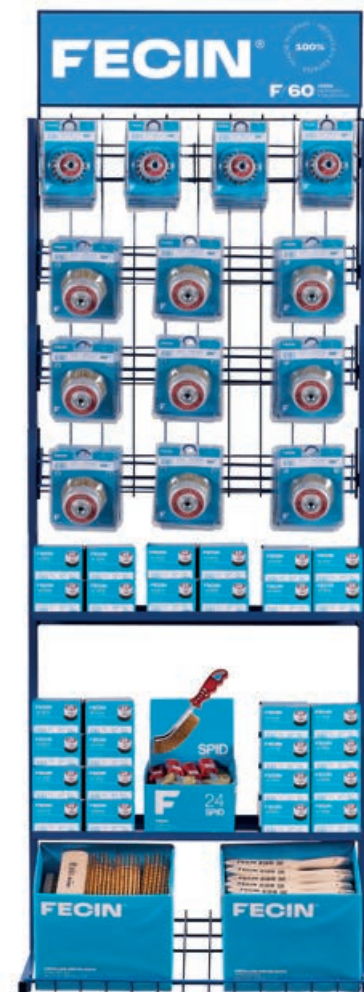
Dimensions	Arbor hole Thread		Contents		Qtd.
	M-14	W-5/8	Code	Description	
69x44x32	<b>0604M14</b>	<b>0604W58</b>	<b>240750CGM14D</b>	Crimped Cup Ø75/ 3" x 0,30 Brass Coated Steel	6
			<b>CO1510CGM14D</b>	Crimped Cup Ø100/ 4" x 0,30 Brass Coated Steel	6
			<b>250601EKM14D</b>	Twisted Knot Cup Ø65/ 2.3/4" x 0,50 Steel	6
			<b>CR1810EKM14D</b>	Conical twisted knot Ø100/4" x 0,50 Steel	6



# General Exhibitor

Assortment of hand brushes, and brushes for grinder and mini grinder

Dimensions	Arbor hole Thread		Contents		Qtd.
	M-14	W-5/8	Code	Description	
210x75x42	<b>E4444M14</b>	<b>E4444W58</b>	<b>240750CG</b>	Crimped Cup Ø75 / 3" x 0,30 Brass Coated Steel	16
			<b>250601EK</b>	Twisted kont cup Ø65 / 2.3/4" x 0,50 Steel	16
			<b>241000CG</b>	Crimped Cup F-24 Ø100 /4" x 0,30 Brass Coated Steel	24
			<b>241250CG</b>	Crimped Cup F-24 Ø125 /5" x 0,30 Brass Coated Steel	20
			<b>25100EK</b>	Twisted kont cup F-25 Ø100 /4" x 0,50 Steel	24
			<b>251251EK</b>	Twisted kont cup F-25 Ø125 /5" x 0,50 Steel	20
			<b>116CG</b>	Hand brush with plastic handle 0,30 Brass Coated Steel	24
			<b>S430CI</b>	Hand brush with handle 4H/0,40 Brass Coated Steel	56



**FECIN**<sup>®</sup>

Pol. Industrial de Itziar H, 7  
20820 Deba, Gipuzkoa (SPAIN)  
T. +34 943 199 284



**[www.fecin.es](http://www.fecin.es)**

**F/60** YEARS  
DESIGNING  
& PRODUCING